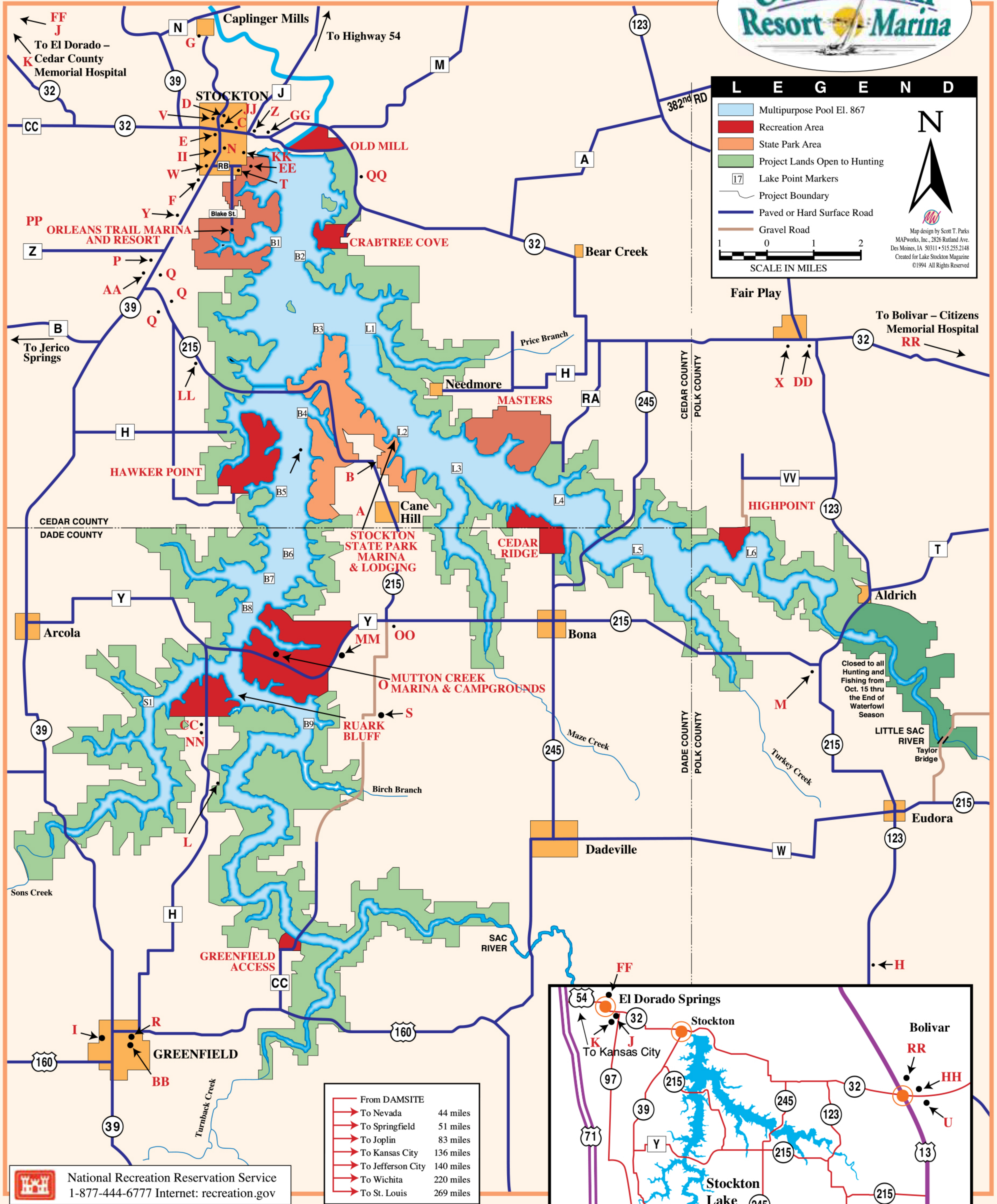


STOCKTON LAKE

This map courtesy of



National Recreation Reservation Service
1-877-444-6777 Internet: recreation.gov

LOCATION KEY - LOCAL BUSINESSES

- | | | |
|--------------------------------|------------------------------|---------------------------------------|
| A—Stockton State Park Marina | P—39 Mini Storage | EE—Squeeze Inn |
| B—Mt. Carmel Inn | Q—A&A Storage | FF—Santa Paula Awning Co. |
| C—Mid Missouri Bank | R—Backroads Flea Market | GG—Spurgeon Yachts |
| D—Hammons Emporium | S—Mutton Creek Getaway | HH—Bill Grant Ford |
| E—Simmons Bank | T—Owl Haven Inn | II—Gwenn Skaalen Kapeluck—Jenny Cully |
| F—CMH Stockton | U—Bolivar Chamber | JJ—Stockton Chamber |
| G—Kimmy's at Caplinger | V—Stockton RV Park | KK—Cabins at Stockton Lake |
| H—7C's Winery | W—Woods Supermarket | LL—Stockton Lake Retreat |
| I—CMH Greenfield | X—Hannah's General Store | MM—Evening Star Campground |
| J—El Dorado Chamber | Y—The Bait Shop | NN—Son Sac Marine |
| K—CCMH El Dorado | Z—Woody's Fast Stop | OO—Son Sac Depot |
| L—Stow Yer Boat | AA—Westside Marine | PP—Orleans Trail Marina & Resort |
| M—Bait Masters | BB—Dade County Dental Clinic | QQ—Calypto Cove Campground |
| N—Great Southern Bank | CC—Southwinds Motel | RR—CMH Bolivar |
| O—Mutton Creek Marina & Marine | DD—Nelson's Auto Service | |

